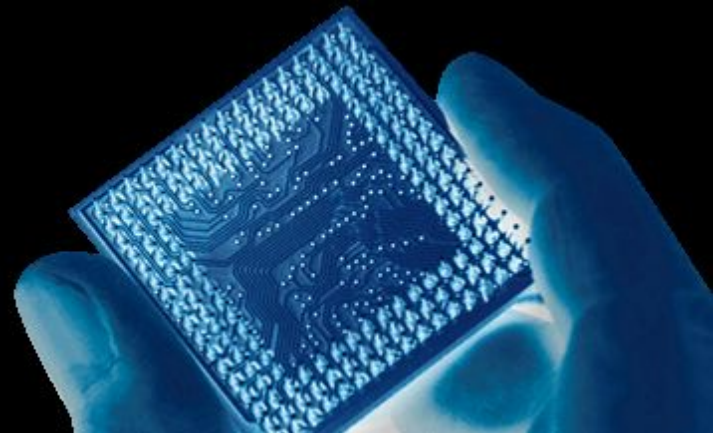


# JeTek-PCB CO., LTD.



[WWW.JETEK-PCB.COM](http://WWW.JETEK-PCB.COM)

# Company Profiles

**Jetek-PCB CO., LTD. is a new-style production-oriented enterprise, focusing on the fast prototype & Small batch PCB manufacturing. The company is located in Shanjing town of Shenzhen City, very closed to the airport, the traffic is very Convenient.**

**Since it was founded, Jetek was been committed itself to be "the most professional PCB enterprise with fast prototype & small batch", our enterprise Culture is "more orders、 Quick turnaround、 Gold quality、 Competitive price", we were been committed ourselves to be the famous leader in PCB industry of China and world.**

**We introduced and customized high quality equipments of each process and bought advanced test equipments, and introduced of the advanced software, It can automatic processing CAM date、 optimize process time and program.**

**We established a technical study group, continuous improvement the process flow, and constantly develop new production technology, to ensure the quick delivery ability.**

**We are good at the highly difficult board of multi-layer HDI board、 Resistance board、 Mix-material board、 Blind-Buried board、 Heavy copper board、 Thick gold board、 High frequency board, etc.. The Main customers are in telecommunications & communication、 industrial control、 security Products 、 Medical equipment、 electric energy、 science and technology、 computer application, etc..**

**Enterprise's development is inseparable from the efforts of the staff, we seek the development of enterprise, the same time we also paid special attention to establish a humanized & social responsibility enterprise.**

**We will unswervingly executive the enterprise goal and the enterprise culture, to supply high quality products and services to our customers.**



# Enterprise Goal

To be the most professional PCB enterprise with fast prototype & small batch

# Enterprise Culture

more orders, Quick turnaround, Good quality, Competitive price

# Quality Policy

continuous improvement, Pursuing Excellence

# Product range

- **PCB fast prototype**

Double sided: 24 hours

4 Layer: 72 hours

6~10 layer: 5 days

- **PCB small lot production**

1-20 layer HDI board、Resistance board、Mix-material board、Blind-Buried board、Heavy copper board、Thick gold board、High frequency board, etc..

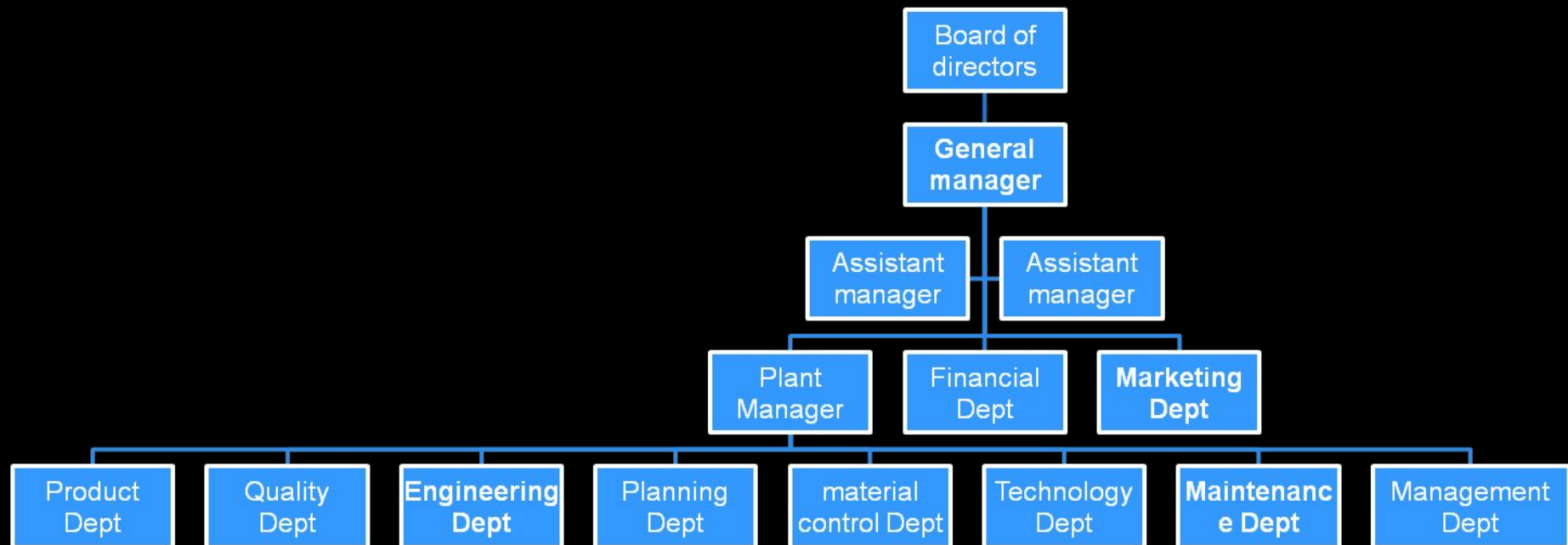
- **PCB solution**

It is for solutions, scientific research units, research and development institutions of large enterprise, colleges and universities and trade company etc.. To panelise multi-designs into fixed size to save setup fee for cost down.

- **Training of the PCB optimized design**

We provide free training of the PCB optimized design to effectively reduce the cost of research and development for customer, and solve the possible problems of customers.

# Organizational Chart



# Capability

Item		Technical Parameters
Min Track Width / Space ( Mil )		3 ~ 4
Min Hole Size	Board Thickness <= 1.6mm	0.3mm
	Board Thickness > 1.6mm	1: 8 ( hole size/board thickness )
Max Layer		20 Layer
Min Annular Ring Width	Vias	5 Mil
	Component Vias	6 Mil
Min Board Thickness	Double sided	0.2mm
	Multilayer	4 - 6 layer : 0.8mm ~ 6mm
		8 - 12 layer : 1.0mm ~ 6mm
		14 - 18 layer : 1.5mm ~ 6mm
20 layer : 2.4mm ~ 6mm		
Max Board Size	Double Sided	500mm X 1200mm
	Multilayer	500mm X 600mm

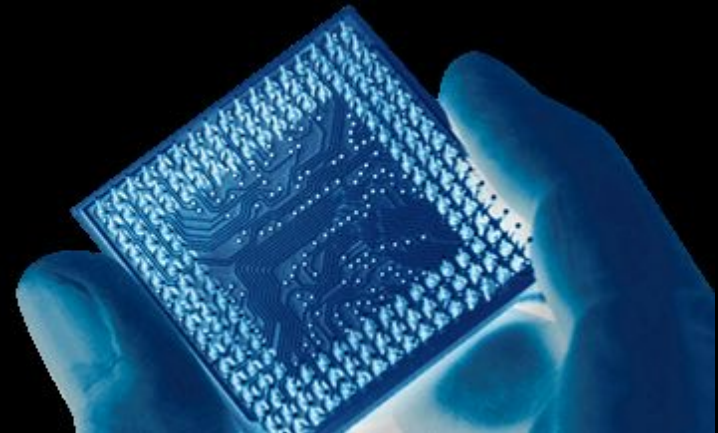
Drilling Tolerance		Location : +/- 3mil
		Dimension : +/- 2mil
Outer shape Tolerance		+/- 0.1mm
Min PTH Copper Wall		15um
Warp		< 1%
Clearance Between track and board edge		Routing : 0.20mm
		V-Cut : 0.40mm
Solder Mask	Mask Window	Min 3 mil
	Mask Bridge	Min 4 mil
	Color	White, Black, Blue, Green, Yellow, Red
Plating / Finishing		HAL, Nickel Plating, Silver Plating, Immersion Nickel, Immersion Gold, Immersion Silver, Golden Finger
Board Material		FR1, CAM 1, FR4, High TG, Aluminium Based, Thick Copper, Gogers.

# Quality Control





# Factory Facility

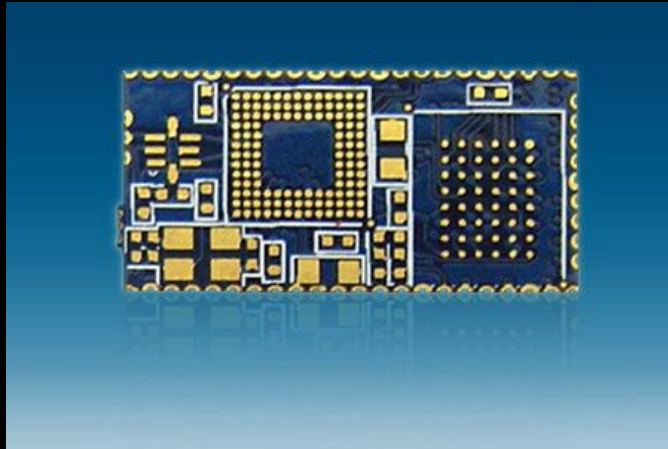




# Factory Facility



# PCB Type

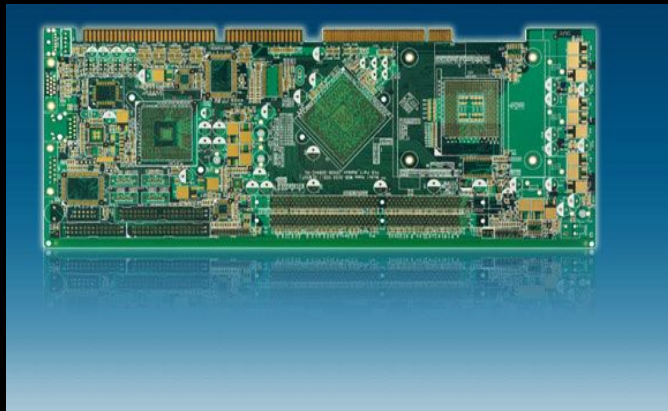


Name: Via-in-Pad Board

Material: FR-4,0.6MM

Surface Plating: ENIG

Remark : Min hole size 0.15MM; Min trace line/space 0.1MM; half-PTH hole; blind via (L1-L2); via-in-pad.



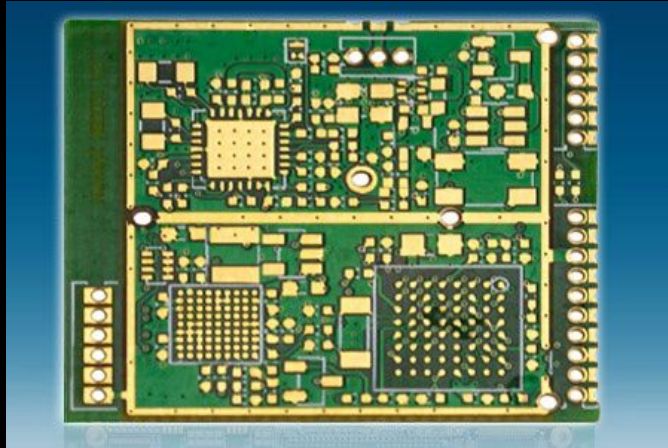
Name: Golden Finger Board - 10layers

Material: FR-4,1.6MM

Surface Plating: Immersion gold + golden finger

Remark: Blind & buried via, min. hole size 0.2mm;  
Min .trace width/space 0.08mm;

# PCB Type

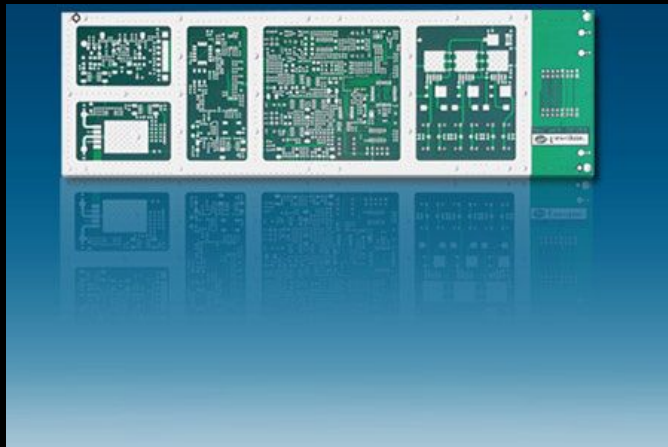


Name: Multilayer PCB-4layer

Material: FR-4,0.8MM

Surface Plating: immersion gold

Remark: half PTH hole, hole-in-pad;  
min. hole size (0.2mm)



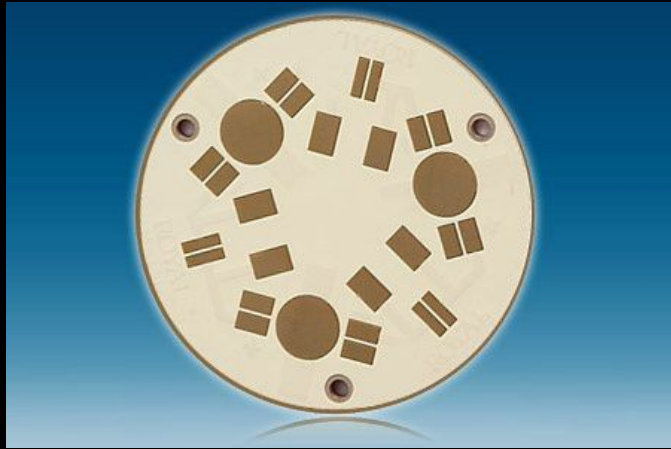
Name: Blind & Buried Board(4-layer)

Material: FR-4, 1.6MM

Surface Plating: Immersion Ag

Remark: blind/buried via, min. hole size:0.2mm

# PCB Type

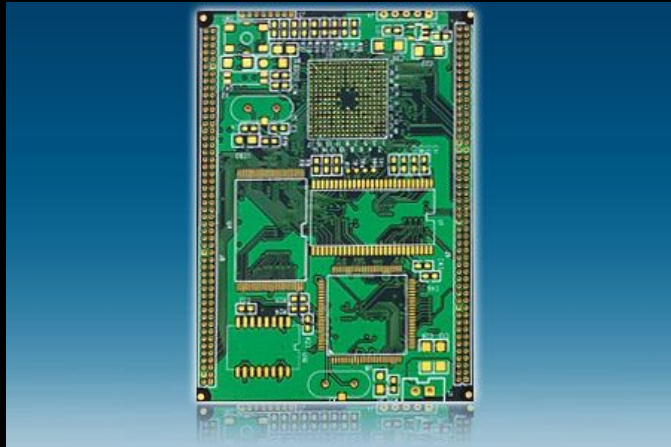


Name: Al-Based Board

Material: Al-Based, 1.6MM

Surface Plating: HAL

Remark: Al-based board.



Name: Impedance control Board(8-layer)

Material: FR-4, 1.6MM

Surface Plating: immersion gold

Remark: impedance board(50ohm,+/-  
10%),8-layer,immersion gold



# Contact us



- Factory Address
- The 2<sup>nd</sup> industrial zone of Dawangshan, Shajing Town, Baoan District, Shenzhen, Guangdong, China
- Tel: +86 0755 29237512      Fax: +86 0755 29070343
- Contact: Ivan Mao
- Email: [Ivan.mao@jetek-pcb.com](mailto:Ivan.mao@jetek-pcb.com) (preferred e-mail)
- Website: [www.jetek-pcb.com](http://www.jetek-pcb.com)

***Your satisfaction, my power!***